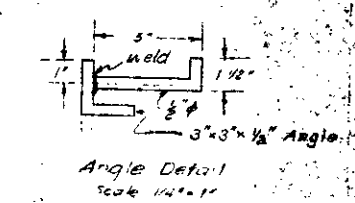


Standard Cast Iron Manhole Cover & Frame may be used in lieu of Pre-cast M.H. Cover on C. Basins. As alternate use M.H. Cover & Frame, Alhambra Foundry Cat #14 A1530 or equal.



Details Typical Catch Basin @ WATERMAN, KENWOOD & CRISTVIEW  
Scale 1" = 1'-0"

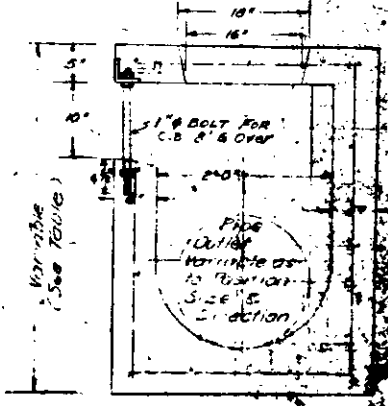
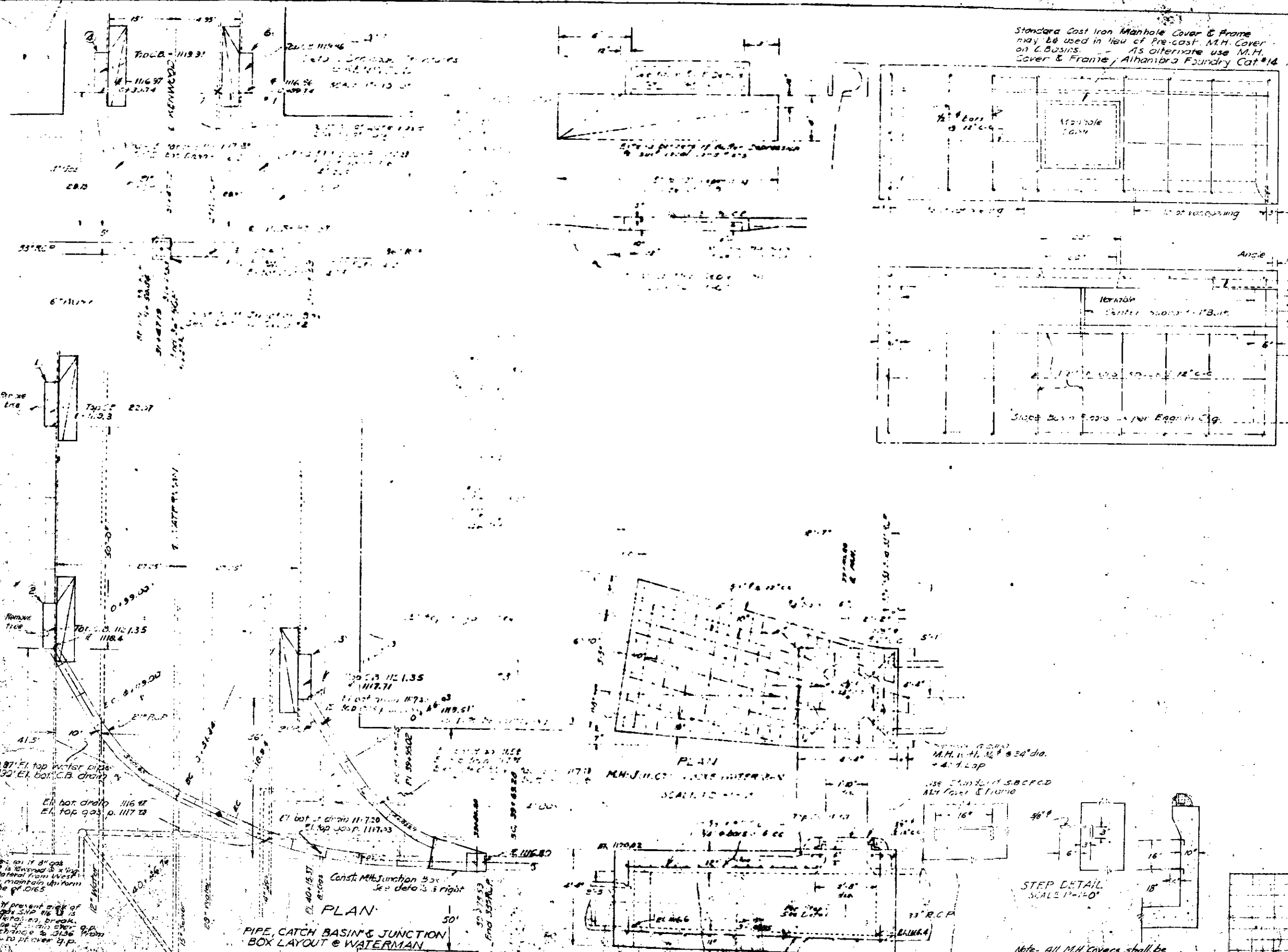


TABLE OF MANHOLE COVERS

No.	Size	Material	Weight	Height	Top Elevation	Bottom Elevation
1	10'	Cast Iron	115.50	11.50	117.20	116.70
2	10'	Cast Iron	115.50	11.50	117.20	116.70
3	10'	Cast Iron	115.50	11.50	117.20	116.70
4	9'	Cast Iron	115.50	11.50	117.20	116.70
5	8'	Cast Iron	115.50	11.50	117.20	116.70
6	6'	Cast Iron	115.50	11.50	117.20	116.70
7	10'	Cast Iron	115.50	11.50	117.20	116.70
8	10'	Cast Iron	115.50	11.50	117.20	116.70
9						
10						
11						
12						



NOV 1 1987

SAN BERNARDINO COUNTY CONTROLLED  
STATE OF CALIFORNIA

**GILBERT ST. DRAIN**  
DETAILS OF DRAIN STRAIGHTS

SCALE: AS SHOWN

DRAWN BY: K.B. DATE: 10/26/87  
CHECKED BY: M.C. DATE: 11/1/87  
APPROVED BY: M.C. DATE: 11/1/87

Note - All M.H. Covers shall be placed at St. grade as per...